

Data Workflow Dashboards

Powered by Proto Financial

Perfect Results. Auditable Processes. Faster Workflows.

Does your team rely on Excel to pull together data from different sources in multi-step data cleaning, integration, analysis and reporting processes? Do these processes include manual steps or macros to copy and paste data, update formulas, type over bad values, filter results and add or drop columns of data?

Are you looking for a way to eliminate these undocumented and risky Excel-based processes while improving productivity?

Proto workflow dashboards will enable your team to complete recurring data-oriented tasks in less time, while reducing risk and institutionalizing key analysis and reporting functions.

Front Office Examples

- » Security screening workflows
- » Portfolio rebalancing
- » Trade and portfolio scenario analysis
- » Performance vs. benchmark analysis

Middle & Back Office Examples

- » Multi-prime exposure / P&L reporting
- » Security master data cleansing
- » Form SH reporting
- » Trade / cash reconciliation

Proto's Solution

Custom workflow dashboards developed with Proto Financial guide users through step-by-step screens to integrate data, handle exceptions, and validate results so that critical data-oriented processes are completed quickly and reliably, the same way every time.

Use Proto Financial when:

- ✓ The process must be completed daily, weekly or monthly and takes substantial time to complete
- ✓ The process involves combining multiple sources of data (portfolio, market data, transactions, user input data, etc.)
- ✓ The process requires several steps to copy and paste data, delete columns, edit formulas, enter data, etc.
- ✓ User input is required to handle exceptions, input overrides, validate results or otherwise touch the data
- ✓ A single person in the office knows how to "run" the spreadsheet and it is not easy to hand off
- ✓ Running the process in Excel has become an unacceptable operational practice

"My Proto workflow saves me a ton of time. I can get through the process in half an hour instead of five or more. It is also automated, so if I have to change a bad number or symbol in one of the source files, it literally flows straight through to the output. Compared to the manual step-by-step process I was doing before, this is a huge improvement."

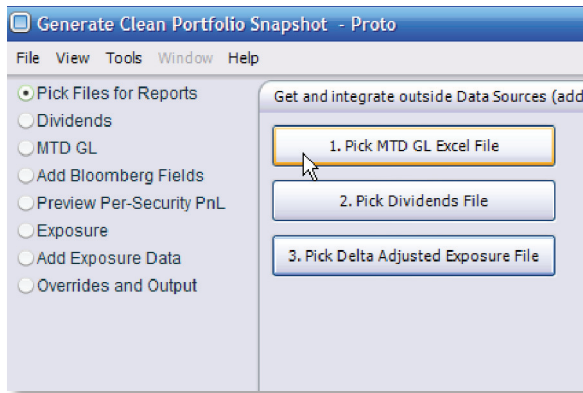
– Hedge Fund CFO

Client Example

A CFO at a multi-billion dollar hedge fund routinely spent over five hours working in Excel to produce exposure and performance analysis for a monthly investor report. The process required dozens of manual steps to copy and paste values, sort and split apart subsets of the portfolio, recreate formulas, type over exceptions, pull in Bloomberg market data, and piece together the final report in Excel. With a Proto Financial workflow dashboard, he completes the task 10x faster through an automated, systematic process that produces superior data assets and reliable reporting results.

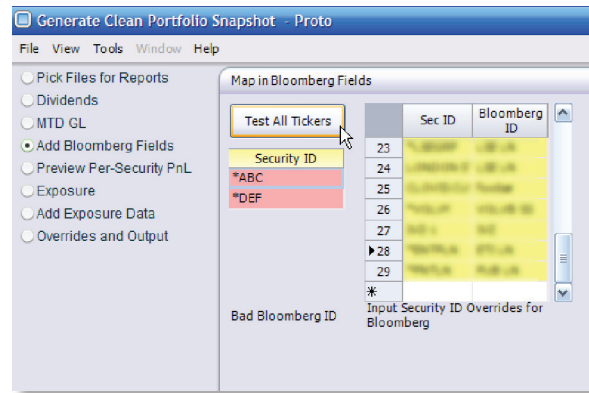
Step 1: Pick new prime broker files

Click a button to browse for the new set of portfolio and exposure files to pull into Proto.



Step 4: Input valid Bloomberg tickers

Find exceptions and enter in new mappings from Security ID to Bloomberg ticker.



Step 17: Review allocation of hedge P&L

Check that total P&L ties out after allocating FX hedging P&L pro rata to individual securities.



| Underlying Position | Percent of Allocation | Issue Currency | Underlying Position | Hedge PnL | Total Hedge PnL | Percent of Allocation | Issue Current |
|---------------------|-----------------------|----------------|---------------------|-----------|-----------------|-----------------------|---------------|
| 1 | .1 | | | | | 10% | |
| 2 | .80 | | | | | 80% | |
| 3 | .08 | | | | | 8% | |
| 4 | .25 | | | | | 25% | |
| 5 | .16 | | | | | 16% | |
| 6 | .27 | | | | | 27% | |
| 7 | 1 | | | | | | |
| 8 | 1 | | | | | | |
| 9 | .23 | | | | | | |
| 10 | | | | | | | |
| 11 | 1 | | | | | | |
| 12 | 1 | | | | | | |
| 13 | .1 | | | | | | |
| * | | | | | | | |

Step 24: Check data and output results

Verify results with built-in reports, then export the analysis and a clean, consolidated data file.



| | Ticker | Company Name | Indus |
|----|--------|--------------|-------|
| 1 | | | |
| 2 | | | |
| 3 | | | |
| 4 | | | |
| 5 | | | |
| 6 | | | |
| 7 | | | |
| 8 | | | |
| 9 | | | |
| 10 | | | |
| 11 | | | |
| 12 | | | |
| 13 | | | |

Proto is a registered trademark of Proto Software, Inc. All other trademarks used herein are the property of their respective owners.

Copyright © 2008 Proto Software, Inc.
All rights reserved.

Office:
Proto Software, Inc.
140 W. 30th Street, 3E
New York, NY 10001

Contact:
Tel: (212) 244-1960
Fax: (212) 244-1580
sales@protosw.com

www.protosw.com